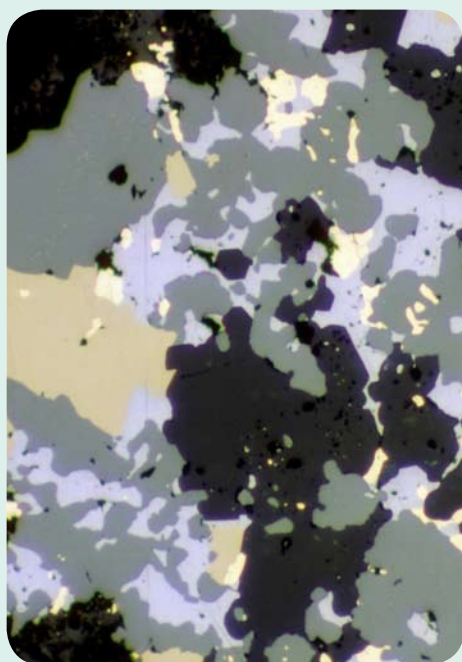




thin-section preparation

Thin-section services from GNS Science



Our Minerals Laboratory provides a high quality range of analytical services to the minerals exploration, geothermal, oil and construction Industries.

Routine thin-sections

- Standard
- Large and extra large
- Impregnated
- Polished
- Fluid inclusion plates
- Coal reflectance mounts

Additional services

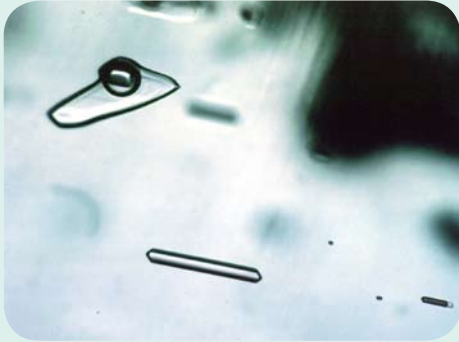
- Blue dye impregnation
- Feldspar staining
- Carbonate staining Quartz and Carbonate packing
- Thin-section repair
- Probe mounts

at a glance →

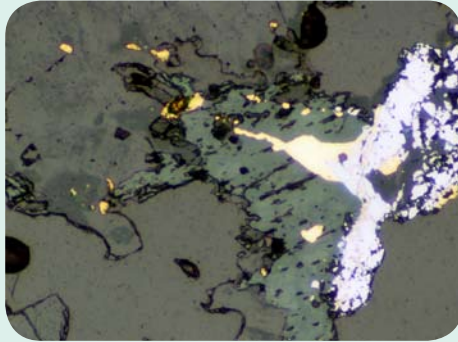
- **Reputation** New Zealand's most sophisticated thin section and mineral extraction laboratory.
- **Priority services** Offering prompt delivery of your priority samples.
- **Consultation** Expert staff deliver free consultation on special requirements.

- **Discounts** for large volume submissions. Contact our staff to enquire.
- **Additional analyses** GNS Science also provides services in one of Australasia's most modern and advanced X-ray diffraction facilities and New Zealand's leading

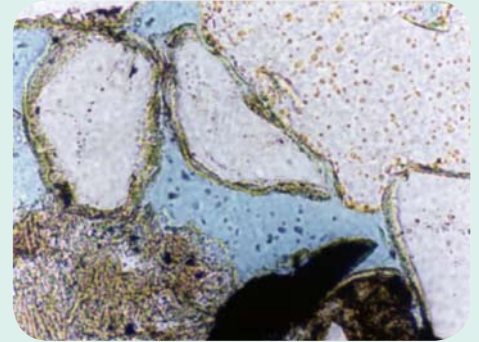
commercial geoscience Stable Isotope Laboratory specialising in hydrology, geothermal and minerals, and hydrocarbons.



Vapour rich fluid inclusions in quartz from a geothermal well, Ohaaki, New Zealand.



Gold and stibnite in quartz and carbonate, Globe-Progress gold mine, New Zealand.



Radial, grain coating, authigenic chlorite. Set in blue stained resin highlighting the dominantly intergranular pore system.

about us →

GNS Science has more than 100 years of experience in assisting exploration and development of mineral resources. We maintain New Zealand's largest mineral database and New Zealand's largest mineral research programme. Our state-of-the-art technology combined with leading-edge scientific knowledge brings innovative solutions to the marketplace.

contact us →

To discuss our services and expertise can be of value to your project, please contact our staff. We welcome the opportunity to discuss your thin section or other mineralogical requirements and can provide quotes and turnaround times to meet your needs.

Contact: Neville Orr, Senior Technician

Call: +64 4 570 4833

Email: n.orr@gns.cri.nz

Or visit: <http://www.gns.cri.nz/services/mineralslab/index.html>

NIC Location

National Isotope Centre
30 Gracefield Road
Lower Hutt 5010
PO Box 31 312
Lower Hutt 5040
New Zealand
T +64-4-570 1444
F +64-4-570 4657

Principal Location

GNS Science
1 Fairway Drive, Avalon
Lower Hutt 5010
PO Box 30 368
Lower Hutt 5040
New Zealand
T +64-4-570 1444
F +64-4-570 4600

Other Locations

Dunedin Research Centre
764 Cumberland Street
Dunedin 9016
Private Bag 1930
Dunedin 9054
New Zealand
T +64-3-477 4050
F +64-3-477 5232

Wairakei Research Centre
114 Karetoto Road
Wairakei 3377
Private Bag 2000
Taupo 3352
New Zealand
T +64-7-374 8211
F +64-7-374 8199

